

Don't get printed hair extensions wet.

- Do not swim or bathe with printed extensions.
- Do not handle printed hair extensions with wet hands.
- Do not put printed hair extensions in mouth.

Works with inkjet printers only.

Not for use in laser printers or copiers, may cause damage.

Do not reattach hair extensions to the paper after use.

Inkjet inks (not included) may stain fabrics and other surfaces.

Avoid contact with carpet, clothing, walls and furniture.

Colors and decorations may vary from those shown.

Hair streak on doll is permanent.

HINTS & TIPS

- If hair is not stuck completely to the paper, don't use it. Please contact Mattel Consumer Relations.
- If you print on the wrong side by mistake, turn the paper over and print again.
- Don't rub printed hair extensions.
- Store hair extension sheets in a flat position in a cool, dry place.
- Use only barbie.com/designablehair for printing on hair extension sheet.
- For best results, use "normal" print quality. See your printer manual for details.
- For jams or any other printer issues, consult your printer manual or contact your printer's manufacturer.
- The sample hair extension on the package is not for printing.

Intel® is a trademark of Intel® Corporation in the U.S. and/or other countries.
Adobe® and Flash® are either registered trademarks or trademarks of Adobe® Systems Incorporated in the United States and/or other countries.
Mac is a registered trademark of Apple Inc.

Mattel, Inc., 636 Girard Avenue, East Aurora, NY 14052, U.S.A. Consumer Relations 1-888-892-6123. Mattel U.K. Ltd., Vanwall Business Park, Maidenhead SL6 4UB. Helpline 01628 500303.
Mattel Australia Pty, Ltd., Richmond, Victoria. 3121. Consumer Advisory Service - 1300 135 312.
Mattel East Asia Ltd., Room 1106, South Tower, World Finance Centre, Harbour City, Tsimshatsui, HK, China. Diimport & Diedarkan Oleh: Mattel SEA Ptd Ltd.(993532-P) Lot 13.5, 13th Floor, Menara Lien Hoe, Persiaran Tropicana Golf Country Resort, 47410 PJ. Tel:03-78803817, Fax:03-78803867.

CONSUMER INFORMATION

Need Assistance? Visit service.mattel.com or call 1-888-892-6123 (US and Canada only).

SERVICE.MATTEL.COM

6+ *Barbie*

INSTRUCTIONS



W4504-0920
X0428



Contents: Please remove everything from the package and compare to the contents shown here. If any items are missing, please contact your local Mattel office. Keep these instructions for future reference as they contain important information.

RECOMMENDED REQUIREMENTS:

Intel® 2.0 GHz processor or equivalent
1024 MB of RAM or above
128 MB of graphics memory or above
Adobe® Flash® Player 10 required
PC/Mac compatible

MINIMUM REQUIREMENTS:

Intel® 1.5 GHz processor or equivalent
256 MB of RAM
64 MB of graphics memory
Adobe® Flash® Player 10 required
PC/Mac compatible

1. Go to www.barbie.com/designablehair and design your hair extension.

2. Do a test print on regular printer paper (not included).

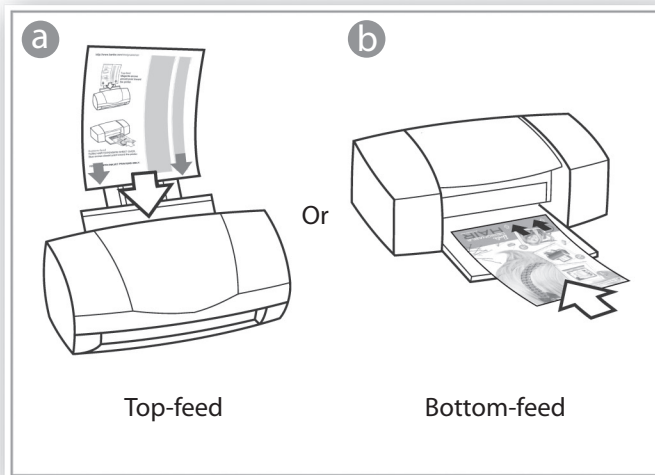


3. Remove all other paper from your printer.


4. Unfold the hair extension sheet, remove the wax paper, and load into your printer.

a If your printer feeds from the top, load hair extension sheet with hair side facing you as shown. Magenta arrows should point toward the printer.

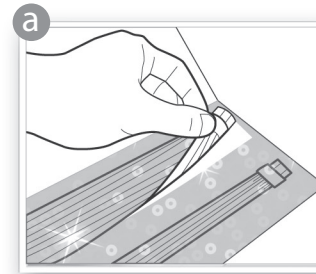
b If your printer feeds from the bottom, load hair extension sheet with cover side facing you as shown. Blue arrows should point toward the printer.



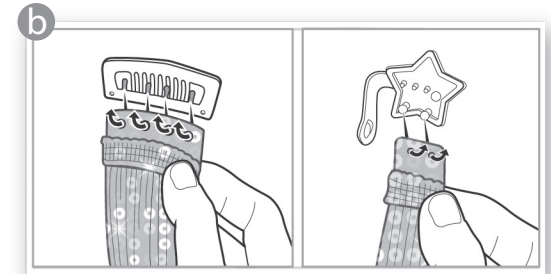
Works with inkjet printers only.

5. Click , then click "Print" or "OK" on the printer dialog window that appears.

6. Allow the ink to dry (drying time varies). Peel hair extension off and attach to a clip.

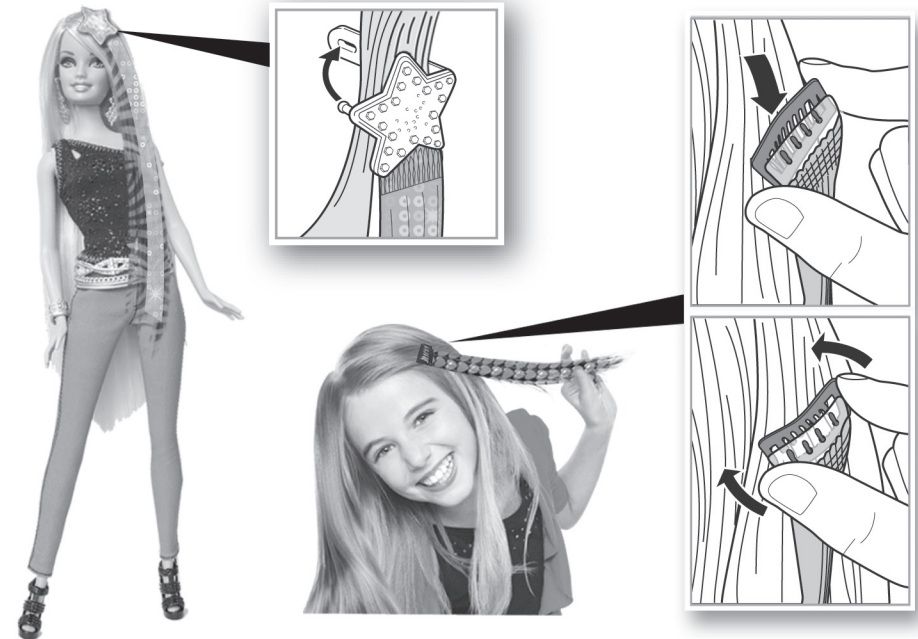


Peel hair extension from the paper.



Attach to clip.

7. Wear in your hair or your doll's hair.



Doll cannot stand alone.

Printer and computer not included.